

PRO FORM is WOODLINE's formwork plywood with enhanced stability and serviceability, which promise a consistency (alignment) of casting, and is suitable for exposed concrete area

- **Cost-effective solution for large projects**
- **For high-quality requirement of concrete surface**
- **Meet the number of reuse as expected**



**EN 13986:2004+A1:2015**

Wood-based panels for use in construction

## Brand

WOOD LINE FORMWORK

## Wood materials

Vietnam hardwood from legally sourced plantation wood

Hardwood: Acacia, Eucalyptus

Softwood: Rubberwood

## Panel Construction

Water Resistance bonding with cross-band outer veneer layers.

Panel density: 680 kg/m<sup>3</sup>

## Panel Surface & Performance

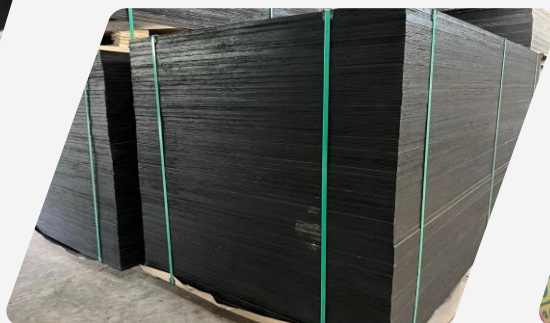
180 grams/m<sup>2</sup> of black-brown phenolic surface film (PSF) on both sides. Alkalinity resistance | AS 6669-2016 Good wear resistance (>300 revolutions on Taber test)

## Standard Sizes

1,220 x 2,440 mm

Size tolerance (width/ length):  
+/- 1.0 mm per meter.

Squareness tolerance:  
+/- 1.0 mm per meter length of diagona



Standard Thicknesses

12mm, 15mm, 17mm, 18mm  
Thickness tolerance: ref. EN 375:2000

Bonding & Formaldehyde Emission

Class 3 | EN 636:2003  
E2, E1, E0 | EN 717-2:1995

Edge Color

Edges of SIGNATURE panels are bare core or painted Black, Red, Brown, as buyer’s request

Number of Reuses

SIGNATURE FORM is designed for use up to **20 times** (2 sides, whole piece). However, the actual number will also be affected by different factors such as storage conditions, construction methods, concrete components, as well as types of concrete and additives used during construction

Packaging

Panels are packed in crates with metal/plastic straps, suitable for loading/unloading by forklifts

Other Conformities & Compliances

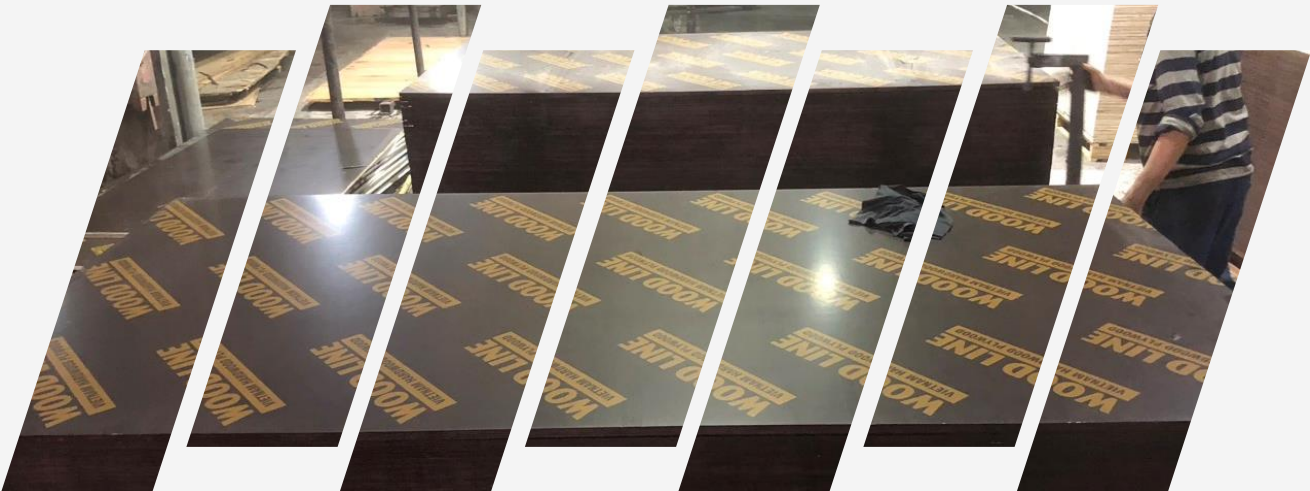
In case FSC certificate or others are required, contact the sales team for further information

Warnings

This product will generate wood dust from sawing, sanding, or shaping. Material safety data sheets are available upon request

Mechanical Properties			
Min bending strength			
Parallel to the width of panel	N/mm <sup>2</sup>	50	EN310:1993
Parallel to the length of panel	N/mm <sup>2</sup>	30	
Mean modulus of elasticity			
Parallel to the width of panel	N/mm <sup>2</sup>	5,000	EN310:1993
Parallel to the length of panel	N/mm <sup>2</sup>	3,000	

Thickness	Crates per container	Cubic meter per container	Maximum net weight
12 mm	16 - 18	45 - 48 cubic meters	28.50 tons
15 mm	16 - 18		
17 mm	16 - 18		
18 mm	16 - 18		



WOOD LINE

Head Office  
2<sup>nd</sup> Floor, Kinh Do Building, 292 Tay Son, Dong Da, Hanoi, Vietnam

[www.woodline.vn](http://www.woodline.vn) | [sales@woodline.vn](mailto:sales@woodline.vn)  
| (+84) 32 984 4894