



WOOD LINE

----- Your imagination, our creation -----

COMPANY PROFILE



Head office: 2nd Floor, Kinh Do Building, 292 Tay Son, Trung Liet, Dong Da, Hanoi, Vietnam



Factory 1: Chi Linh District, Hai Duong Province, Vietnam



Factory 2: Tam Duong District, Vinh Phuc Province, Vietnam



Telephone: (+84) 962 786 805



Email: Sales@woodline.vn; Joeybach@woodline.vn



Website: woodline.vn



WOOD LINE CO., LTD



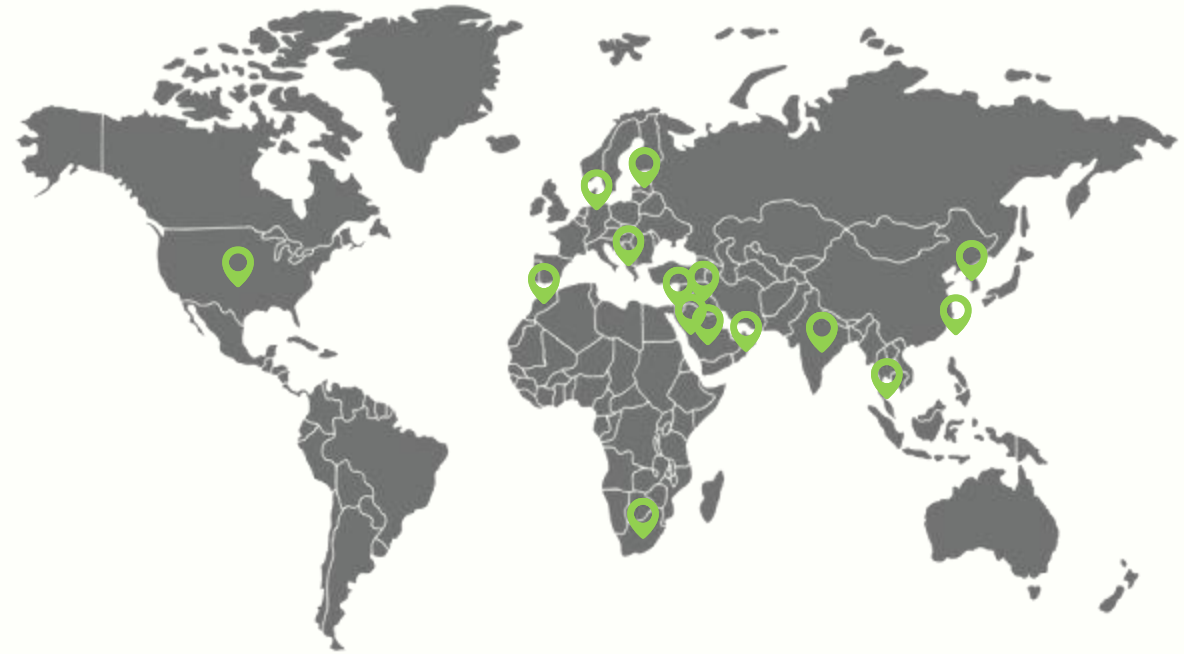
Welcome to WOOD LINE

WOOD LINE is a company specializing in the production and trade of industrial plywood. With modern equipment, along with a professional production and high responsibility team, WOOD LINE will bring high quality products, guaranteed delivery time, and reasonable prices to meet the requirements of customers.

We believe that finding the right solution to meet customer needs is the prerequisite for a long-term partnership. Our core values also center around these foundations, upon which we are "Your imagination, our creation".

About us

WOOD LINE specializes in offering plywood solutions and associated products in Vietnam and worldwide.



Although we were only established in 2019, in just 5 years, we have had rapid development.



Currently, WOOD LINE plywood is present in 17 countries around the world including: Korea, Taiwan, Malaysia, India, Saudi Arabia, Oman, Kuwait, UAE, USA, Germany, Denmark, Greece, Estonia, Poland, Morocco, South Africa,... and continue to develop.



For the past years, we have continually challenged ourselves to develop innovative, yet sustainable solutions for a diverse needs in construction and architectural design.



~120
Employees (06/2024)



02
Production facilities



1.500
Panels per day (capacity)

--- Your imagination, our creation ---

Our machines for production

In Wood Line, we invest in a full system of machinery and equipment to produce high quality products. The main types of machinery that we own include:

- Core Veneer Jointing Sewing Splicing Machine
- Glue Spreading Machine
- Lay-up Line
- Cold Press Machine
- Hot Press Machine
- Sanding Machine
- Polishing (for face veneer) Machine



Our production process



Quality - Consistency - Responsibility

What is plywood?

Plywood is made up of a number of rotary core veneers arranged at perpendicular angles to each other, bonded with special glue, and solidified thanks to a special heating and pressing processes.

Plywood owns many outstanding characteristics of natural wood and industrial wood. They are namely dimensional stability, high uniformity and strength.





WOOD LINE's product portfolio

- Film-faced plywood (for construction, concrete formwork)
- Commercial plywood (for furniture, woodworking...)
- Vietnam White Birch plywood
- LVL - Laminated Veneer Lumber (for packing, furniture & construction)
- Packing plywood
- Marine plywood

FILM-FACED PLYWOOD

WOOD LINE’s film-faced plywood is our well-known plywood solution which is suitable for building and industrial construction. It offers outstanding features:

- **Durable:** The film-faced surface is resistant to concrete corrosion. The plywood base panels are at the same time water resistant for repeated use.
- **Strong:** High mechanical strength
- **Smooth finishing surface for the concrete**

			
Lite form	Signature form	Premium form	Pro form
A cost-effective Film Faced Plywood, offering standard surface performance and dimensional stability that are suitable for construction	WOOD LINE's main-stream product line for concrete shuttering, which offers good surface performance and mechanical strength	WOOD LINE's formwork plywood with enhance stability and serviceability, which offers a consistency(alignment) of casting, and is suitable for exposed concrete area	WOOD LINE's highest quality of film-faced plywood, which offers both maximum reuse and ensures maximum concrete surface quality
Standard size: 1220x2440mm	1220x2440mm; 1250x2500mm (or cut half upon request)		
Standard thickness: 12mm,15mm,17mm,18mm	Any thickness from 6mm to 30mm		
<ul style="list-style-type: none">• Melamine glue• Water resistance• E2 emission standard	<ul style="list-style-type: none">• A-bond and B-bond, WBP Melamine and Phenolic glue• E0, E1, E2 emission standard		
<ul style="list-style-type: none">• EN 13968• TCVN 11025• ISO 9001:2015			



COMMERCIAL PLYWOOD FOR FURNITURE

Furniture plywood is a pioneering product that can meet the strict requirements of aesthetics, functionality, and safety for users.

Product portfolios of Furniture Plywood are more diversity because of the variety in furniture designs. WOOD LINE Furniture Plywood is a product with Vietnam wood core (acacia, eucalyptus, styrax, rubberwood...) and wood raw veneer surface for interiors:

- Vietnam White Birch plywood;
- Natural Wood veneer plywood (Okoume, Bintangor, Eucalyptus/Canarium, Pine, Poplar, Ash, Oak...).

WOOD VENEER PLYWOOD



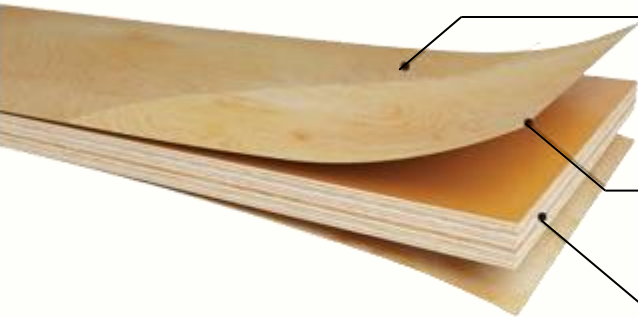
- (1) Natural wood veneer (face veneer)
- High durability, and good water resistance
 - Fancy natural wood grain is visible
 - Less deformation, long-lasting stability

- (2) Base plywood (core veneer)
- Vietnam soft/hard wood from legally source
 - Consistent and stable in dimension
 - Strong and nail-holding

	Birch plywood	Wood veneer plywood
Size	1220*2440mm	1220*2440mm (1250*2500mm available for Eucalyptus/Canarium face)
Thickness	5mm to 21mm	
Core veneer options	Hardwood Acacia, Eucalyptus & Softwood Styrax, Ormosia	
Glue options	MR (moisture resistance) glue; WBP (water boiling proof) glue	
Formaldehyde emission standard	E2, E1, E0 standard (CARB P2)	

WOOD LINE’S Commercial Plywood Portffolio

VIETNAM WHITE BIRCH PLYWOOD



- (1) UV coat (optional)
- Resistant to water and common chemicals
 - Limit yellowing the surface and scratching resistant

- (2) Birch raw veneer
- Face veneer layer is made from 100% imported birch

- (3) Base plywood (core veneer)
- Vietnam soft/hard wood from legally source
 - Consistent and stable in dimension
 - Strong and nail-holding



Our other plywood product lines

WOOD LINE always aims for sustainable development and product diversification. Besides the two traditional product lines of film-faced and furniture plywood, we have successfully researched and developed packing plywood, LVL and LVB to meet the diverse needs of customers.



Packing plywood



Packing plywood is manufactured in Vietnam with 100% eucalyptus or acacia. We have taken advantage of cheap labor cost and raw materials to optimize costs.

- Grade available: A, B, C
- Face veneer options: Bintangor, Styrax, Pine,...

LVL



LVL (laminated veneer lumber) & LVB (laminated veneer board) is a special product in the woodworking industry. They are used in construction beamings, furniture (sofa frames, bed slats, bed frames,...) and packing purposes.

- Core veneer: Styrax, Acacia, Eucalyptus;
- Face veneer options: Pine, Styrax, Okoume...
- Size: Cut to size upon request

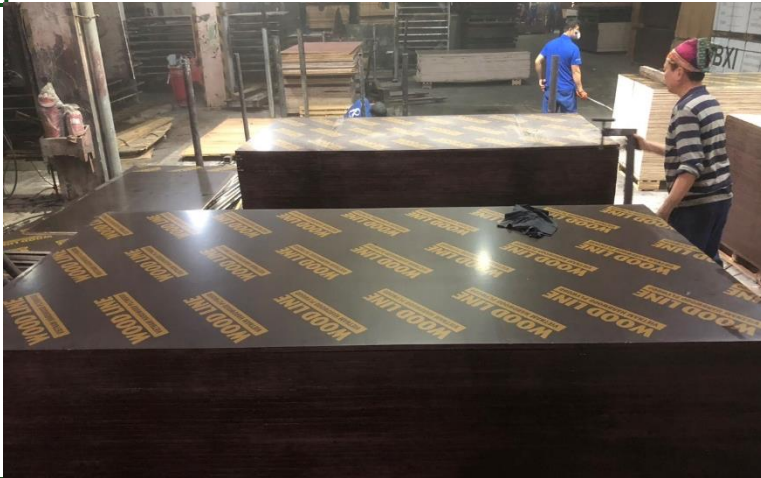
LVB



At WOOD LINE, our top priority is to ensure quality according to our customers' standards.

"Quality and Consistency"

are our motto and philosophy, and we always ensure this in every order, from the very first order.



QUALITY WE CARE



To do that, we train our workers to always pay attention to every step in the production process, from the raw material classification, to the QC process before loading.

We are responsible for the quality of the products we make and have the highest commitment to our customers about any problems related to product quality.



PACKING AND LOADING



A full-page background image of a lush green forest. In the center-left, a person wearing a white hard hat, a light-colored long-sleeved shirt, and a high-visibility orange safety vest is working. They are holding a green tool, possibly a chainsaw or a large pruning shears, and are focused on a tree trunk. Sunlight filters through the dense canopy of green leaves, creating a bright, dappled light effect across the scene. The forest floor is covered with fallen leaves and low-lying green plants.

JOIN THE MISSION OF SUSTAINABLE DEVELOPMENT WITH WOOD LINE

WOOD LINE always focuses on sustainable development by continuously enhancing environmental performance and safety in all of our business solutions and operations.

WOOD LINE is committed to sustainably sourcing legal raw materials. Our wood log suppliers are committed to reforestation after harvesting. This is a small action that we can do to join hands to protect the sustainable development of our common home, the Earth...

Contact us

Head office: 2nd Floor, Kinh Do Building, 292 Tay Son, Trung Liet, Dong Da, Hanoi, Vietnam

Factory 1: Chi Linh District, Hai Duong Province, Vietnam

Factory 2: Tam Duong District, Vinh Phuc Province, Vietnam

Telephone: (+84) 962 786 805

Email: Joeybach@woodline.vn

Website: woodline.vn

